

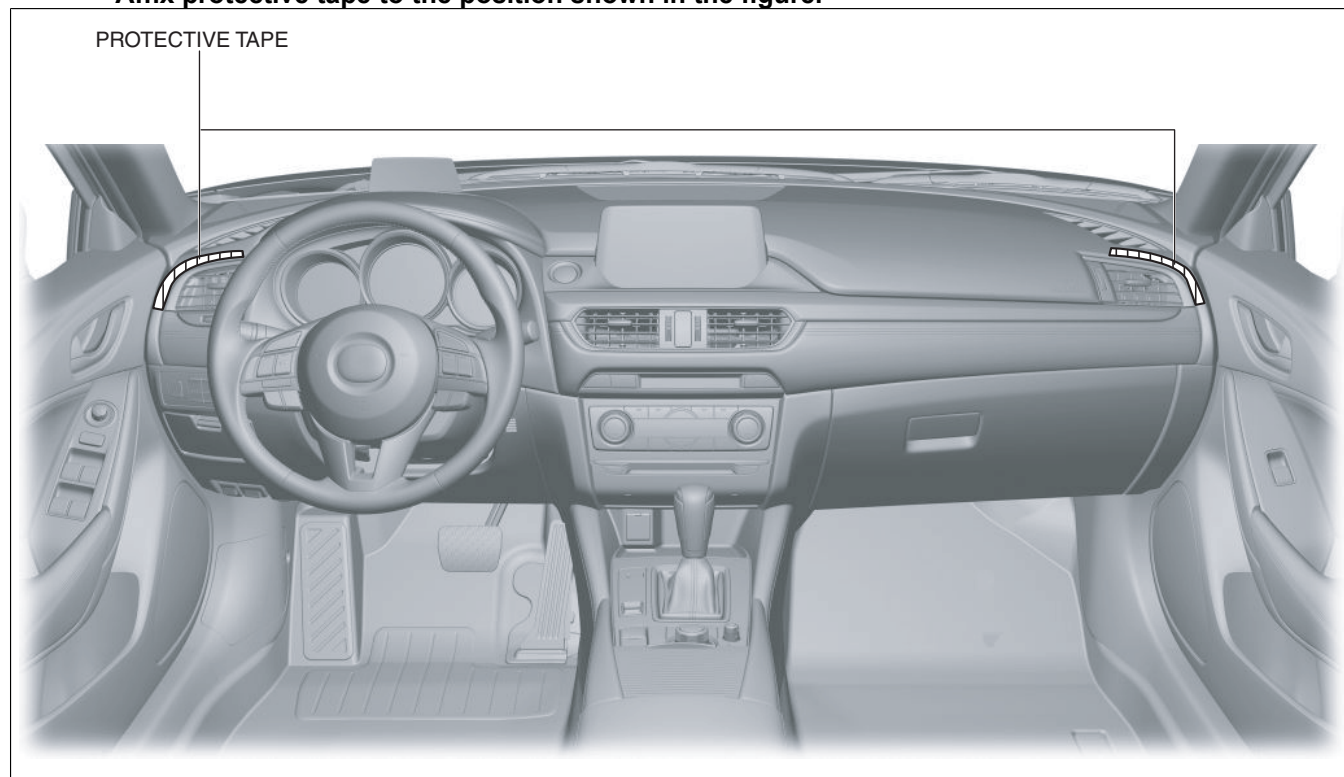
VENTILATOR GRILLE REMOVAL/INSTALLATION

id091700804600

Side Ventilator Grille

Caution

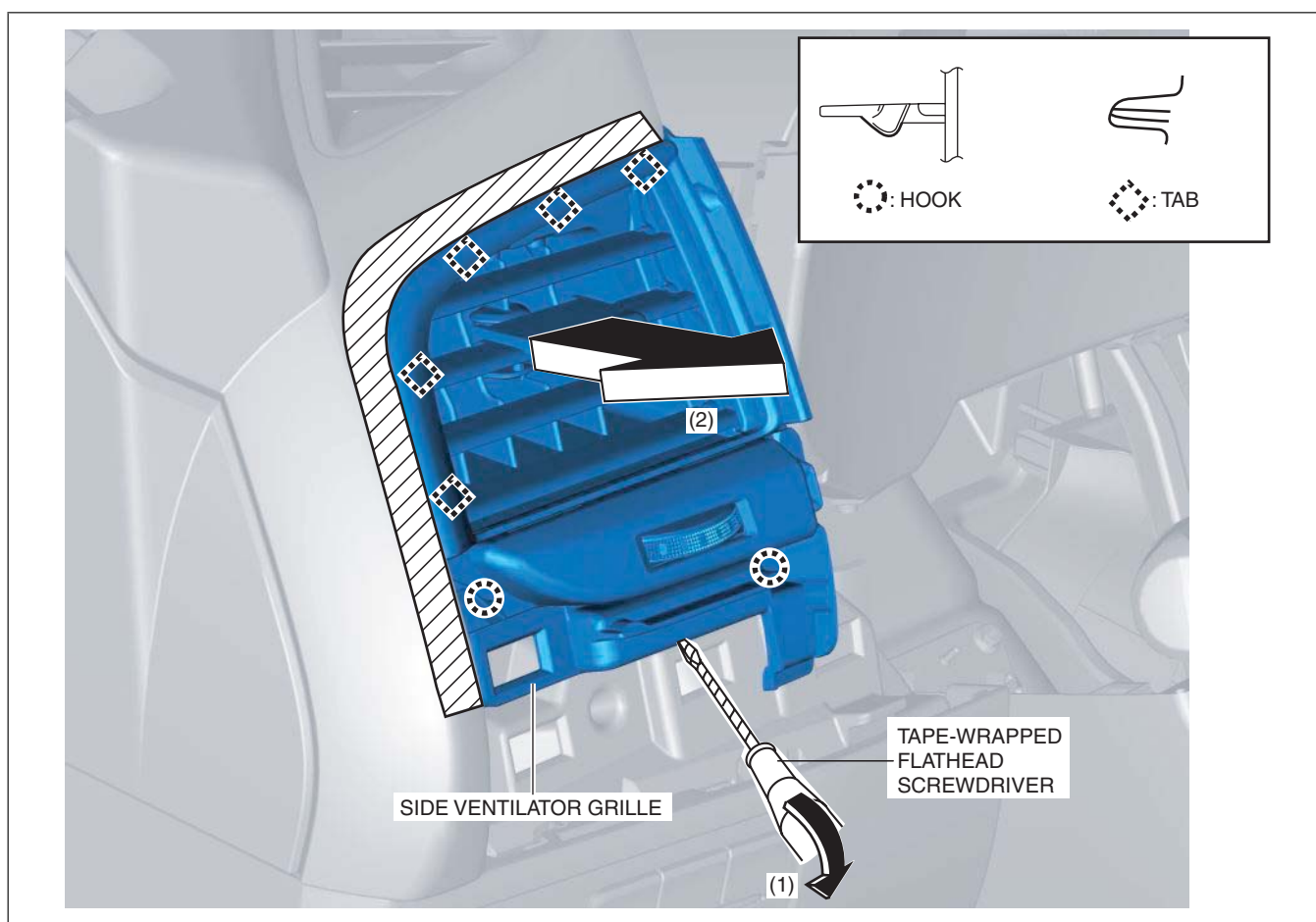
- Affix protective tape to the position shown in the figure.



am6xuw00007529

Driver-side

1. Disconnect the negative battery cable. (See NEGATIVE BATTERY CABLE DISCONNECTION/CONNECTION [SKYACTIV-D 2.2].) (See NEGATIVE BATTERY CABLE DISCONNECTION/CONNECTION [SKYACTIV-G 2.0, SKYACTIV-G 2.5].) (See NEGATIVE BATTERY CABLE DISCONNECTION/CONNECTION [SKYACTIV-G 2.0, SKYACTIV-G 2.5 (WITHOUT i-stop)].)
2. Remove the following parts:
 - (1) Upper column cover (See COLUMN COVER REMOVAL/INSTALLATION.)
 - (2) Meter hood (See METER HOOD REMOVAL/INSTALLATION.)
 - (3) Driver-side decoration panel (See DECORATION PANEL REMOVAL/INSTALLATION.)
3. Insert a tape-wrapped flathead screwdriver in the position indicated by the arrow (1) in the figure and detach hooks, tabs.

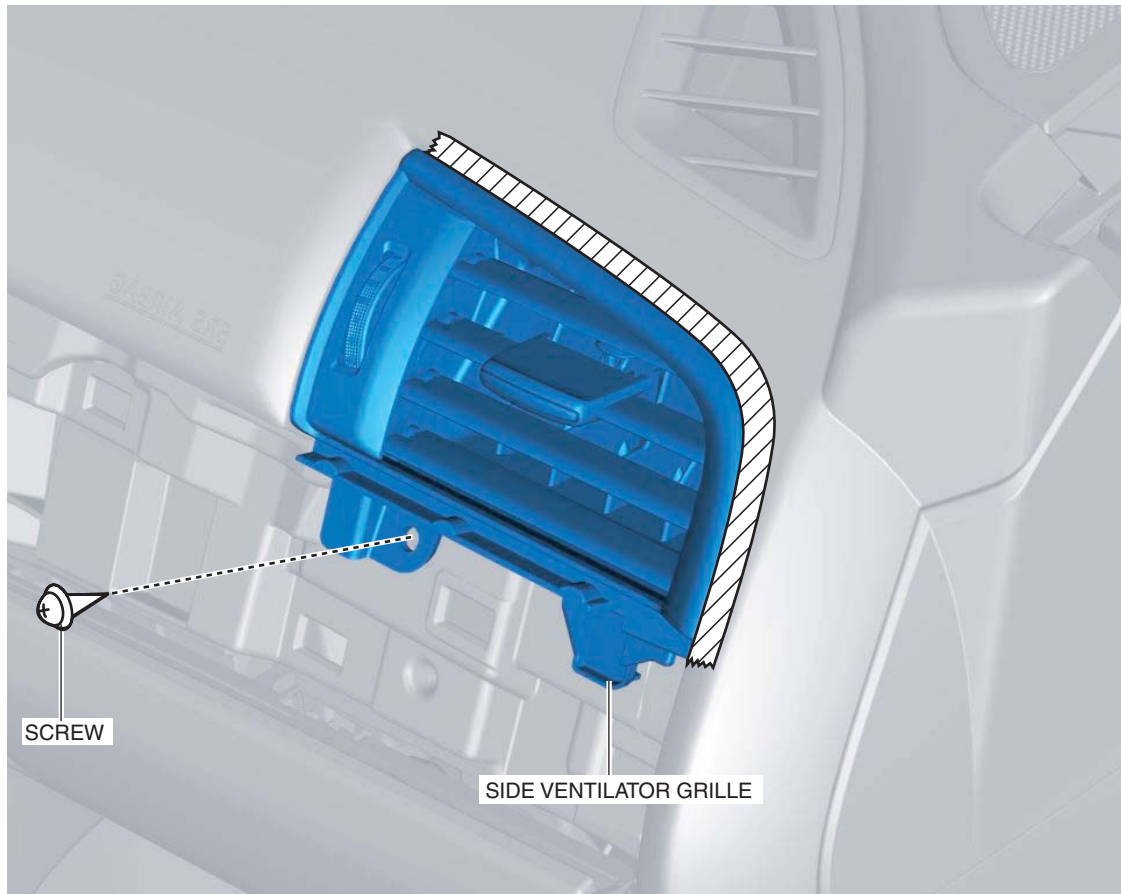


am6xuw00007915

4. Remove the side ventilator grille in the direction of the arrow (2) shown in the figure.
5. Install in the reverse order of removal.

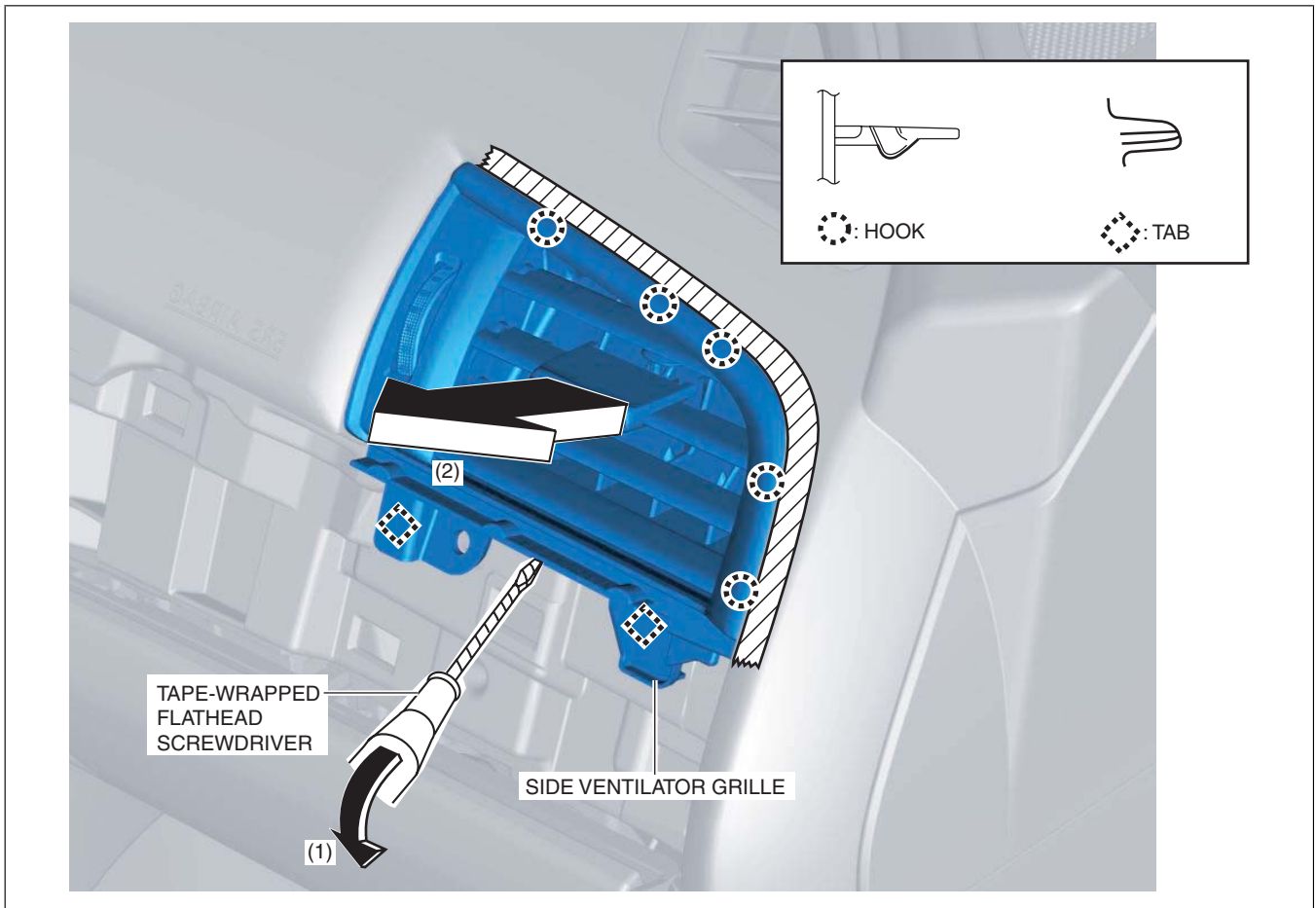
Passenger-side

1. Disconnect the negative battery cable. (See NEGATIVE BATTERY CABLE DISCONNECTION/CONNECTION [SKYACTIV-D 2.2].) (See NEGATIVE BATTERY CABLE DISCONNECTION/CONNECTION [SKYACTIV-G 2.0, SKYACTIV-G 2.5].) (See NEGATIVE BATTERY CABLE DISCONNECTION/CONNECTION [SKYACTIV-G 2.0, SKYACTIV-G 2.5 (WITHOUT i-stop)].)
2. Remove the following parts:
 - (1) Upper column cover (See COLUMN COVER REMOVAL/INSTALLATION.)
 - (2) Meter hood (See METER HOOD REMOVAL/INSTALLATION.)
 - (3) Passenger-side decoration panel (See DECORATION PANEL REMOVAL/INSTALLATION.)
3. Remove the screw.



am6xuw00007531

4. Insert a tape-wrapped flathead screwdriver in the position indicated by the arrow (1) in the figure and detach hooks, tabs.

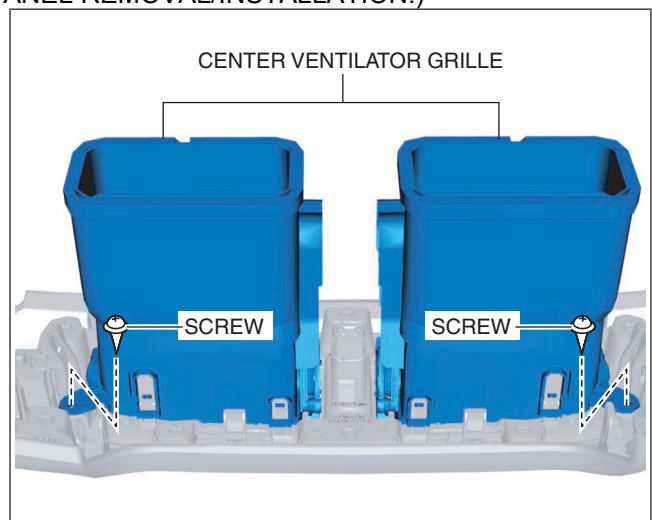


am6xuw00007532

5. Install in the reverse order of removal.

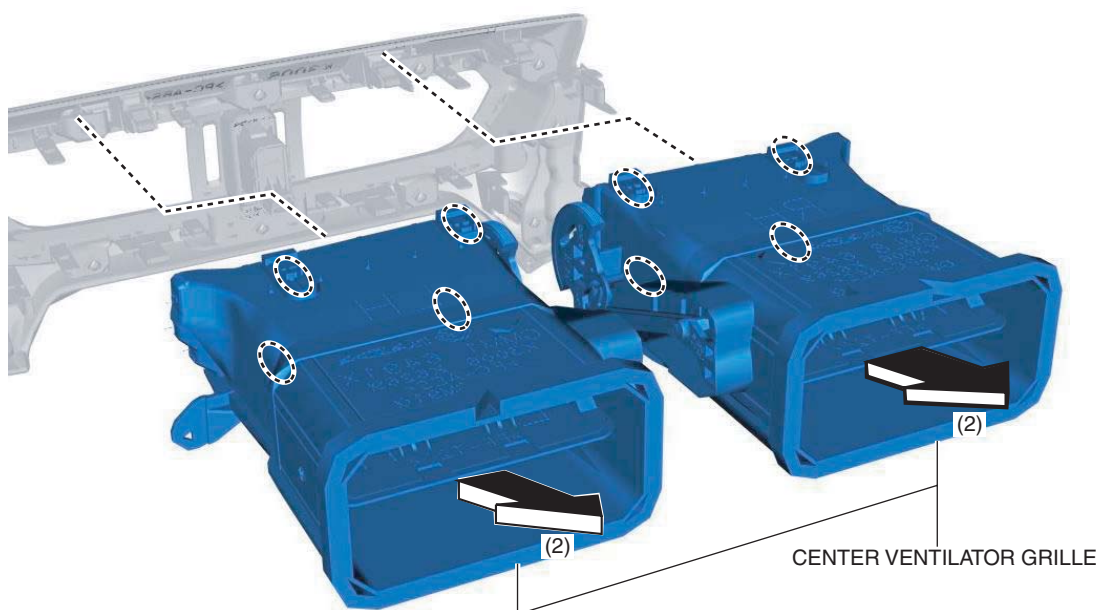
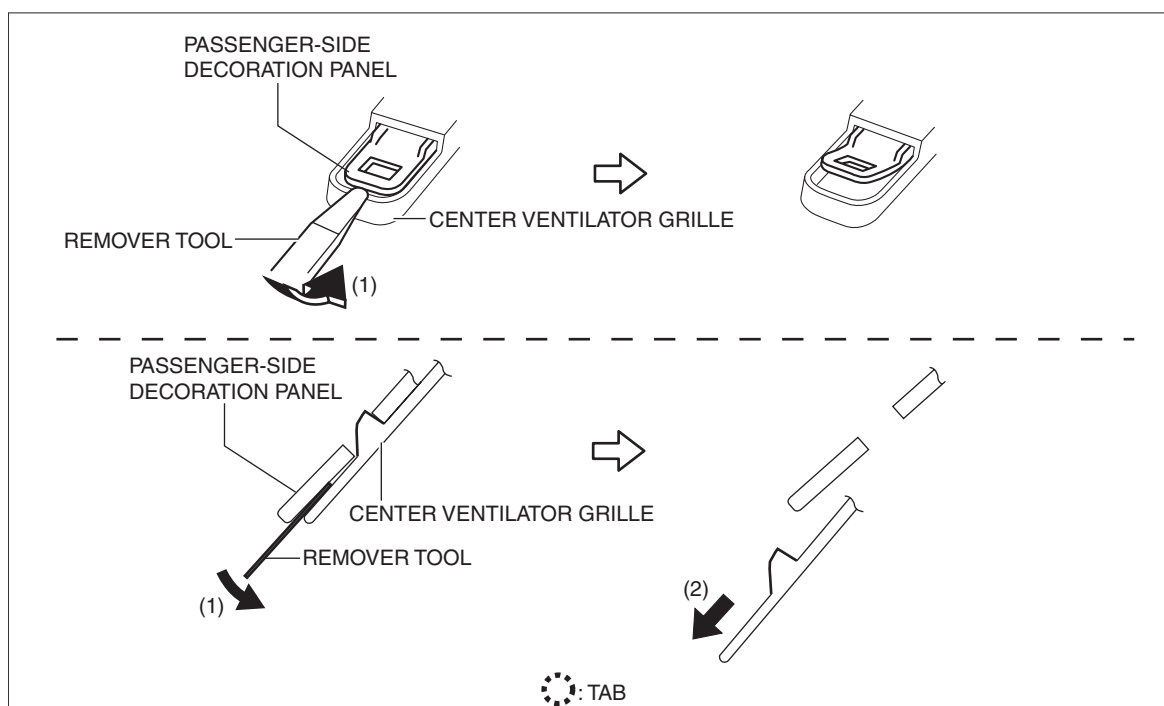
Center Ventilator Grille

1. Disconnect the negative battery cable. (See NEGATIVE BATTERY CABLE DISCONNECTION/CONNECTION [SKYACTIV-D 2.2].) (See NEGATIVE BATTERY CABLE DISCONNECTION/CONNECTION [SKYACTIV-G 2.0, SKYACTIV-G 2.5].) (See NEGATIVE BATTERY CABLE DISCONNECTION/CONNECTION [SKYACTIV-G 2.0, SKYACTIV-G 2.5 (WITHOUT i-stop)].)
2. Remove the following parts:
 - (1) Upper column cover (See COLUMN COVER REMOVAL/INSTALLATION.)
 - (2) Meter hood (See METER HOOD REMOVAL/INSTALLATION.)
 - (3) Driver-side decoration panel (See DECORATION PANEL REMOVAL/INSTALLATION.)
3. Remove screws.



am6xuw00007533

4. Move the remover tool in the order of arrows (1) and (2) shown in the figure and detach the tabs from the passenger-side decoration panel.



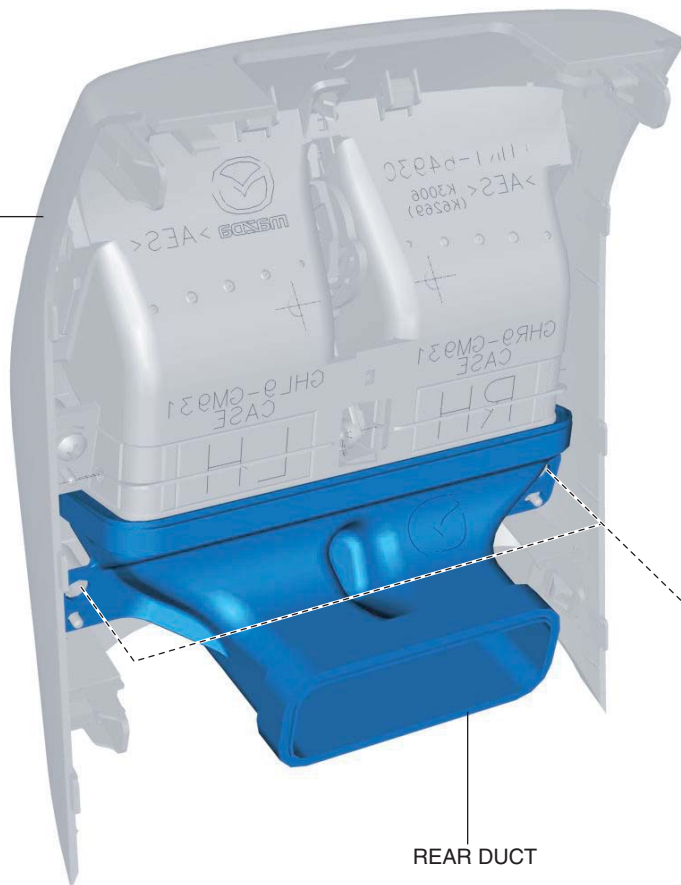
5. Install in the reverse order of removal.

am6xuw00007534

Rear Ventilator Grille

1. Remove the console panel. (See REAR CONSOLE REMOVAL/INSTALLATION.)
2. Remove the screws, then remove the rear duct.

CONSOLE PANEL

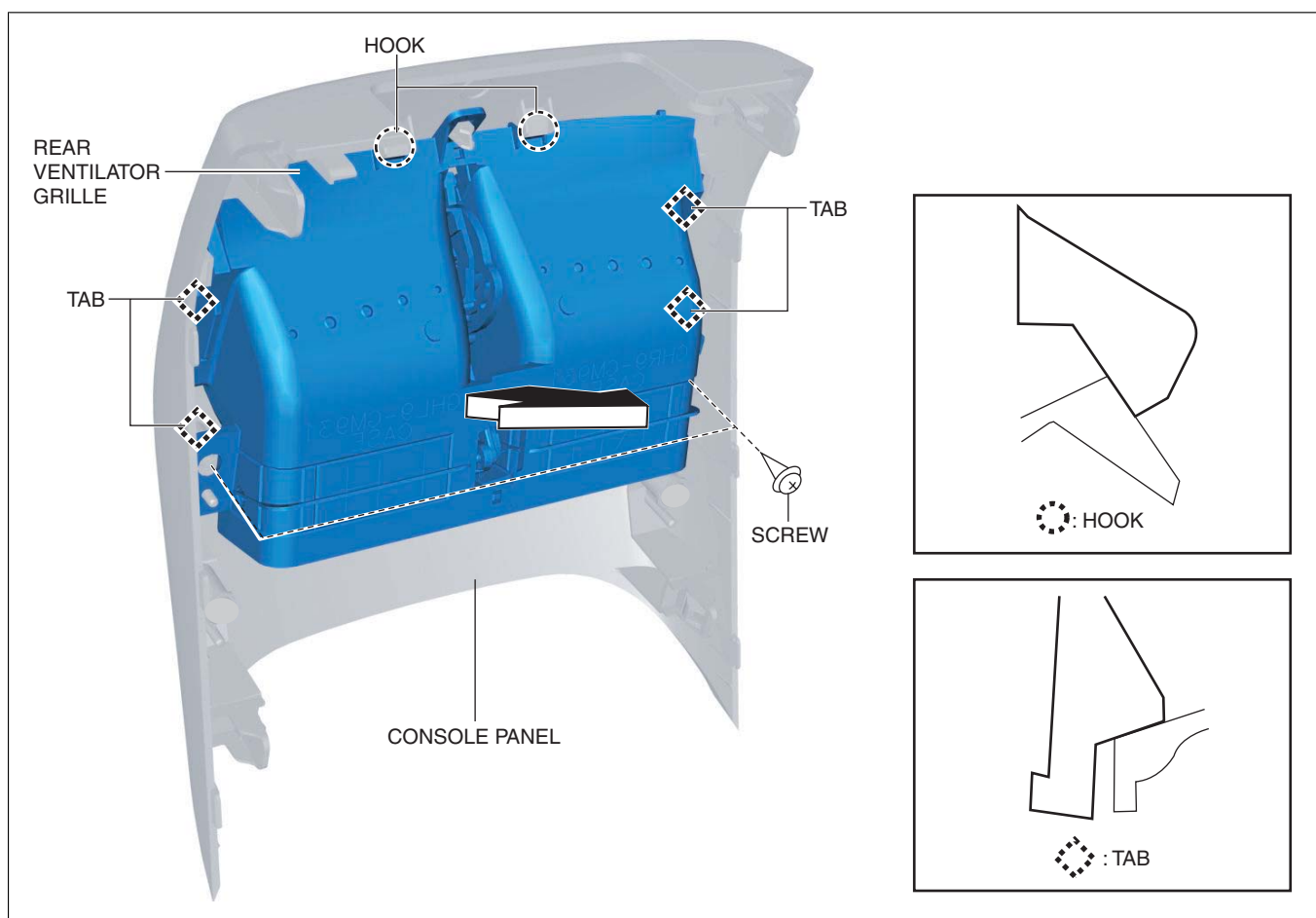


REAR DUCT

SCREW

3. Remove screws.

am6xuw00007535



am6xuw00007916

4. Remove the rear ventilator grille in the direction of arrow shown in the figure while detaching hooks and tabs.
5. Install in the reverse order of removal.