



## TECH BULLETIN

National Customer Support Department, Mazda Australia Pty. Limited,  
Ph: 1300 131 335, Fax: (03) 8540 1870, eMail: technicalqa@mazda.com.au

Bulletin: **NS020\_12** Issued: **4/05/2012** Revised: **16/09/2013** Page: 1 of 5

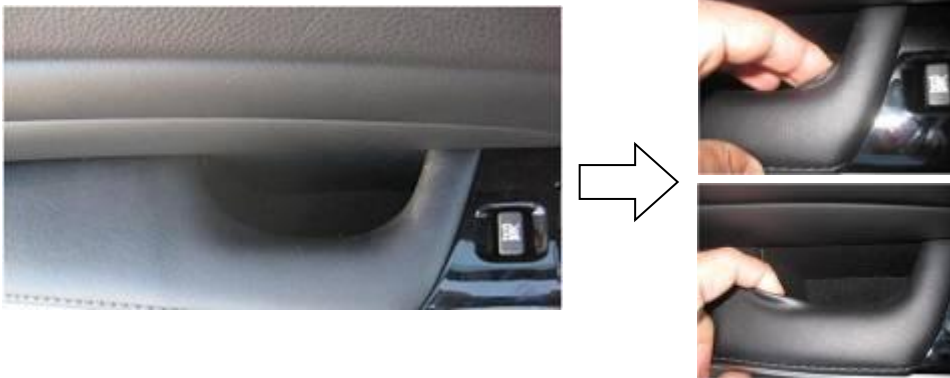
Title: **Peeling of the Door Trim Arm Rest Surface**

Model(s): **CX-7 (ER10\*2)** Category: **Body**

Technician Initials: \_\_\_\_\_

### DESCRIPTION

The surface of the door trim arm rest may peel off and give a poor appearance.



### CAUSE

Due to inappropriate adhesion, the arm rest surface may peel when it is handled over time.

### AFFECTED VIN RANGE

All ER10\*2 vehicles

Amended

### REPAIR PROCEDURE

If you encounter a customer complaint on this concern, replace the damaged arm rest with a modified one according to the following procedure.

**Note: Pay attention to keep the door trim clean during the repair.**

All pictures shown below are front door trims, but the procedure is the same for rear door trims.

1. Remove the door trim according to the Workshop Manual:  
"Front Door Trim Removal / Installation" or "Rear Door Trim Removal / Installation".

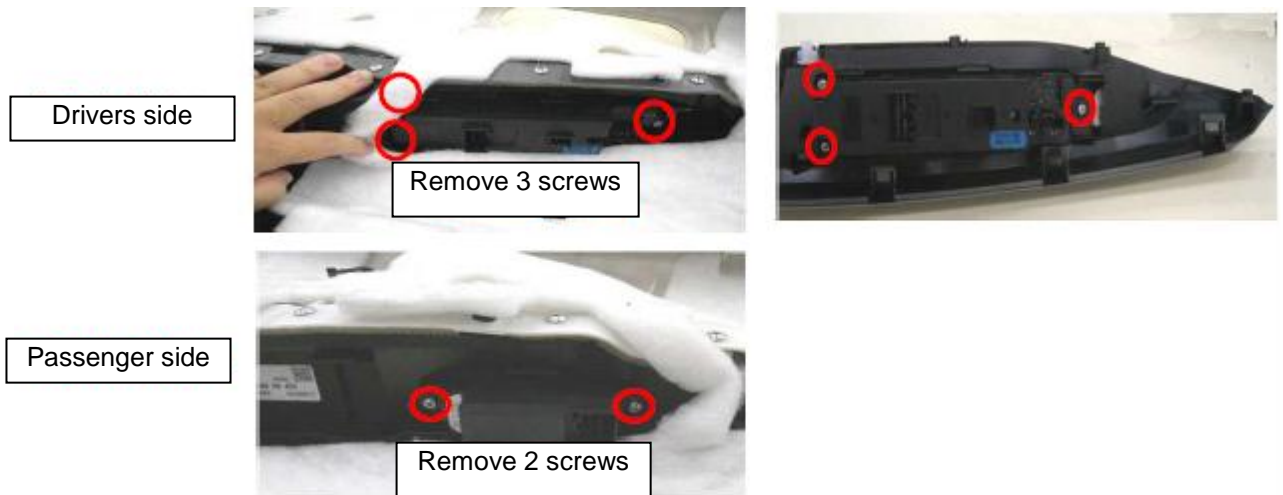
2. Remove the center decorative panel fixing screws.

- Door trim without a grip: 13 screws
- Door trim with a grip: 14 screws



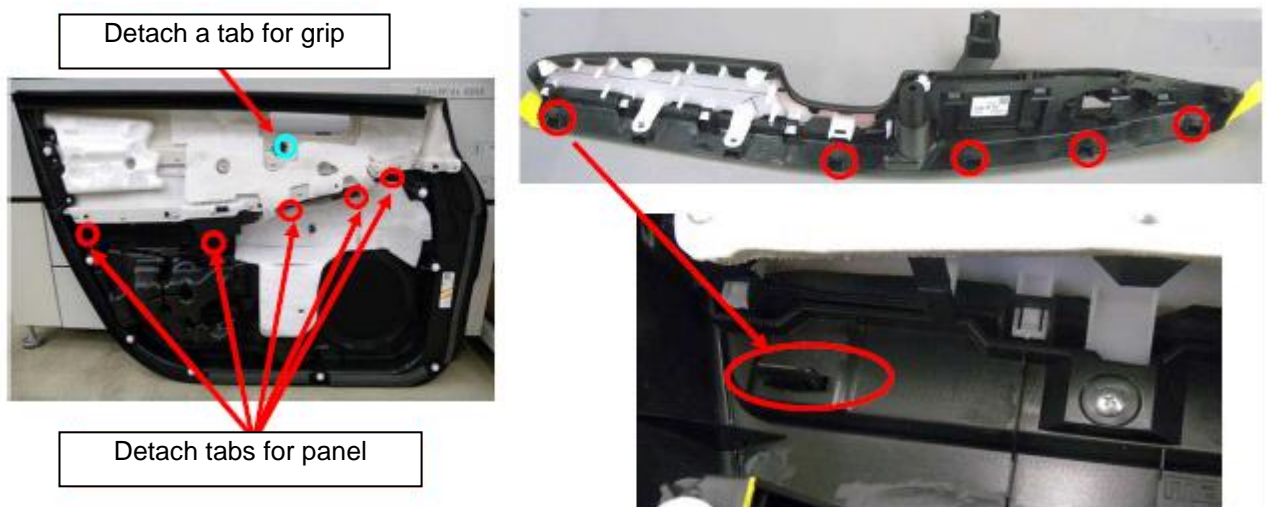
3. Remove the switch unit fixing screws and remove the switch.

- Driver side: 3 screws
- Passenger side: 2 screws

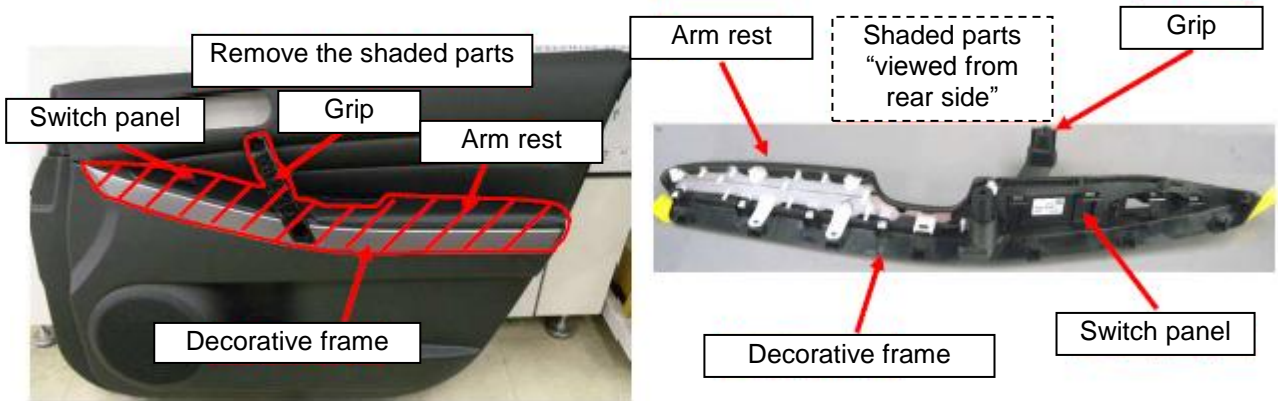
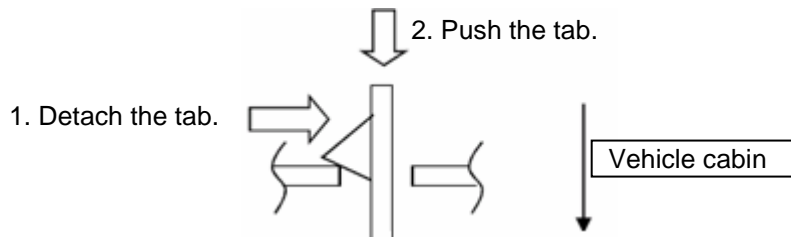


4. Detach the door trim tabs.

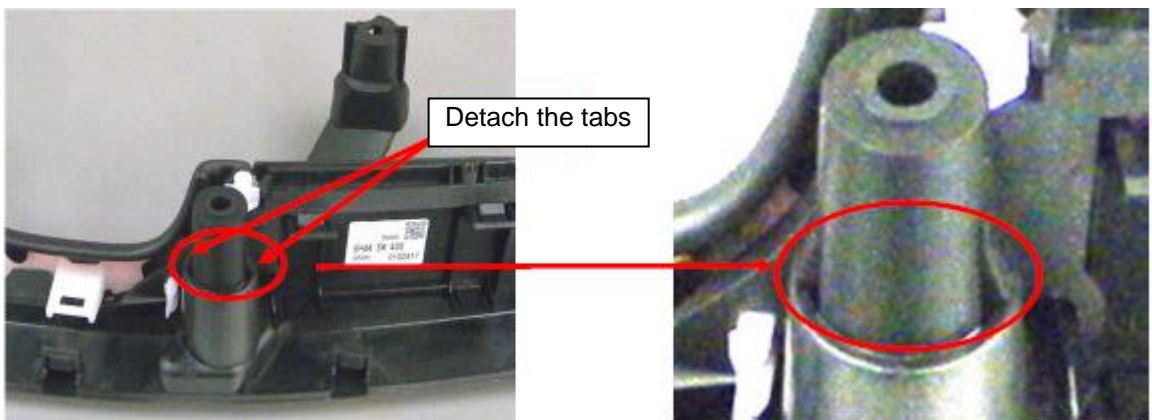
- Door trim without a grip: 5 tabs for decorative frame
- Door trim with a grip: 5 tabs for decorative panel & 1 tab for grip



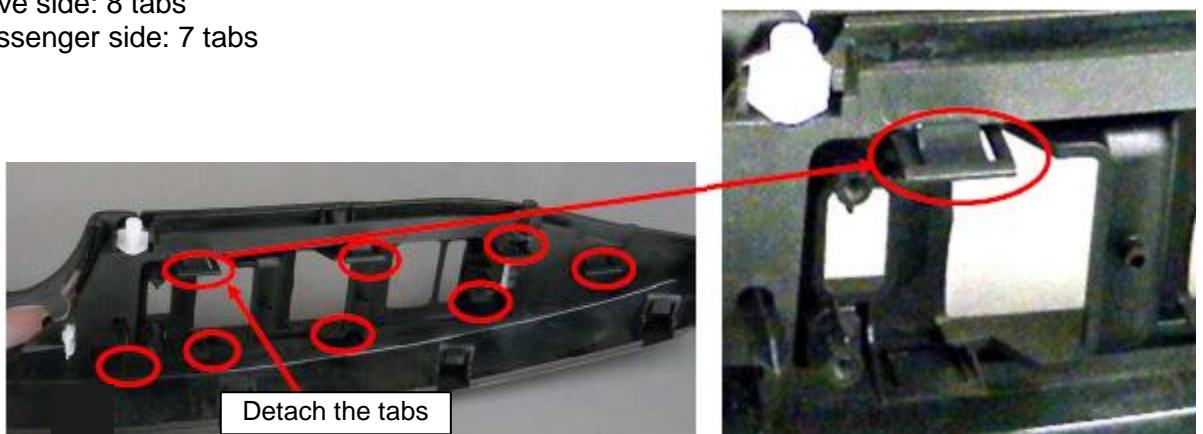
- Detach & push the tabs (see below), then pull the frame starting from the rear of the frame and moving to the front, remove the frame from the door trim. The frame, switch panel, arm rest and grip will be removed as one unit.



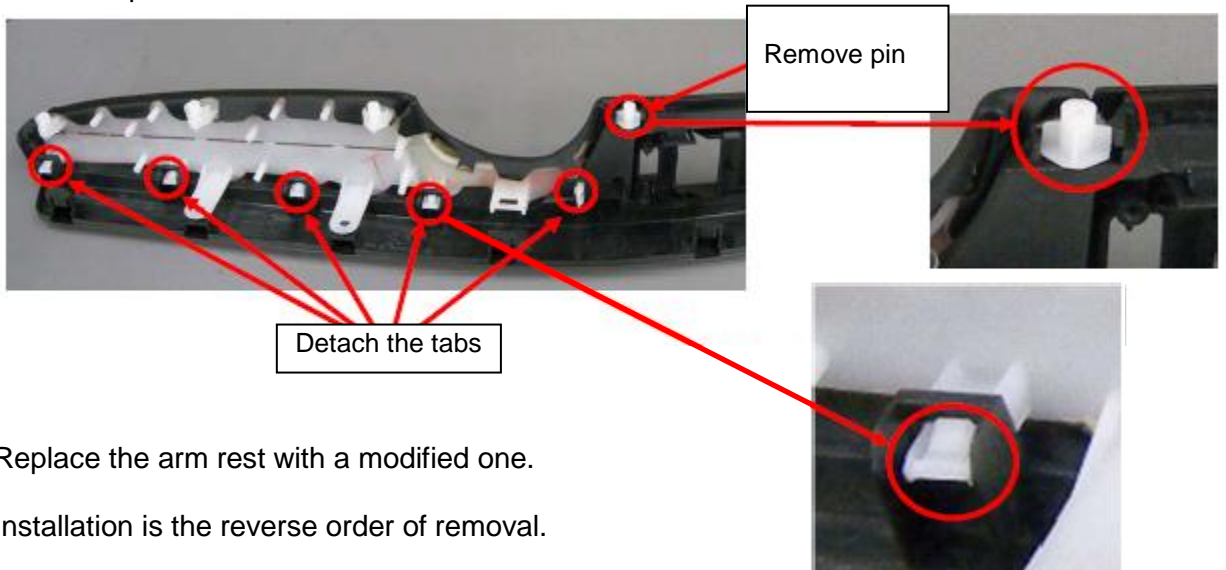
- For door trims fitted with a grip, remove the grip from the decorative frame by detaching the 2 tabs.



- Remove the switch panel from the decorative frame by detaching the tabs.
  - Drive side: 8 tabs
  - Passenger side: 7 tabs



8. Remove the arm rest from the decorative panel.
  - Detach 5 tabs
  - Remove pin



9. Replace the arm rest with a modified one.
10. Installation is the reverse order of removal.

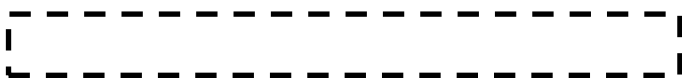
***PART INFORMATION***

<b>Part Number</b>	<b>Part Name</b>	<b>Q'ty</b>
EH44-69-371 02	Front arm rest (right)	1
EH44-69-371 34		
EH44-69-391 02	Front arm rest (left)	1
EH44-69-391 34		
EH44-69-376A 02	Rear arm rest (right)	1
EH44-69-376A 34		
EH44-69-396A 02	Rear arm rest (left)	1
EH44-69-396A 34		

**Note:**

Colour code 02 = Black

Colour code 34 = Sand



Parts with colour code 34 are BOD (Buy on demand).

**Parts ETA deleted as parts have arrived at Mazda PDC**

## WARRANTY INFORMATION

Causal Part No.	Part number of arm rest used for repair
Q'ty	1
Symptom Code	92
Damage Code	9L
Operation No.& Labor Hours	XXG7FXRX & 0.5 Hrs (1 arm rest replacement) XXG7GXRX & 0.8 Hrs (2 arm rests replacement) XXG7HXRX & 1.1 Hrs (3 arm rests replacement) XXG7JXRX & 1.4 Hrs (4 arm rests replacement)
Period Covered	Normal warranty period
PAR Requirement	Not required

'All rights reserved. Reproduction by any means, electronic or manual including photocopying, recording or by any information storage and retrieval system or translation in whole or part is not permitted without written authorisation from Mazda Australia Pty.Ltd. Copyright © 2012 Mazda Australia Limited.

'Notwithstanding the above, reproduction within a Mazda Dealership to the extent necessary for the service operations of that Dealership is permitted. The information and repair procedures described in this Bulletin are intended for use by appropriately qualified and Mazda trained automotive technicians only, utilising Mazda repair information and special tools and must not be disclosed to any person or company outside the Mazda network.

These procedures should not be attempted by unqualified personnel, as personal and vehicle safety may be compromised. The initial recipient of this Bulletin within a Mazda Dealership assumes responsibility for internal distribution of the Bulletin in accordance with the distribution list contained in the Bulletin header.

Author: Technical Helpdesk Team

For further enquiries, contact the Technical Helpdesk on 1300 131 335 or [technicalqa@mazda.com.au](mailto:technicalqa@mazda.com.au)

R004/12