

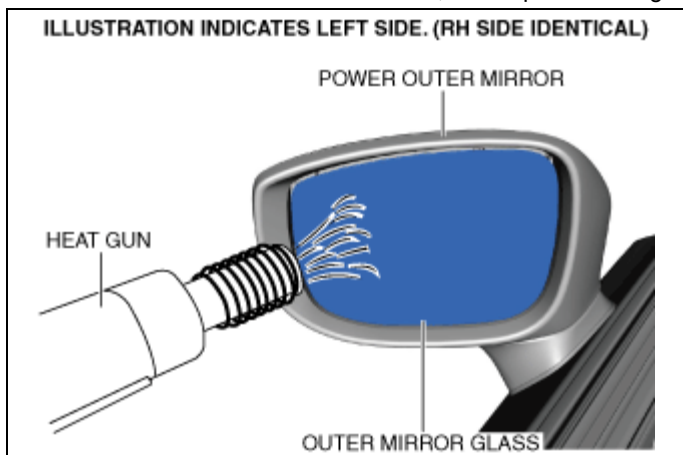
OUTER MIRROR GLASS REMOVAL

Note

- Removal of the outer mirror glass can be facilitated by warming the back of the glass to approx. 50 °C {90 °F} to 60 °C {108 °F} using a heat gun.

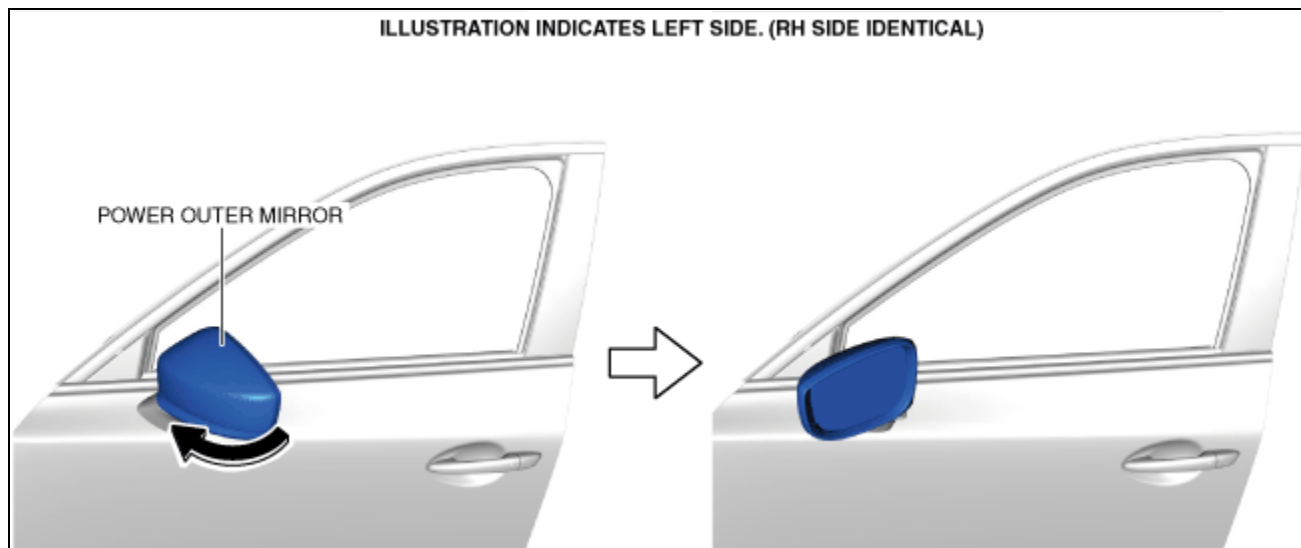
Caution

- Be careful not to overheat the outer mirror, as temperatures higher than 60 °C {108 °F} could deform it.



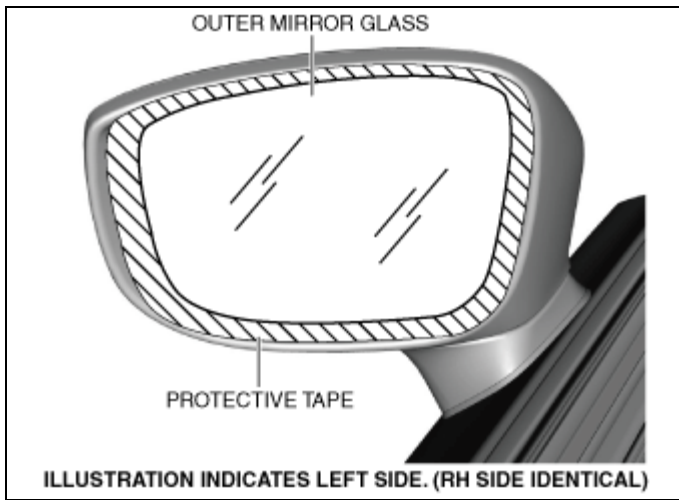
ac5uuw00006041

1. Disconnect the negative battery terminal. (See [NEGATIVE BATTERY TERMINAL DISCONNECTION/CONNECTION.](#))
2. To facilitate removal of the outer mirror glass, orient the outer mirror in the direction of the arrow shown in the figure.



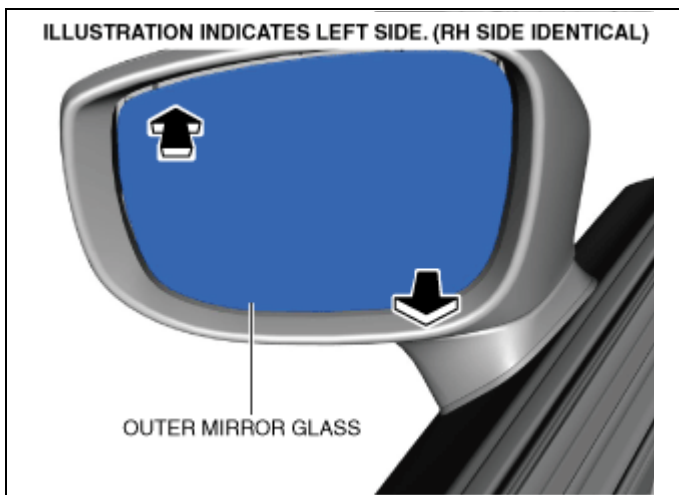
ac5uuw00006042

3. To prevent scratches or damage, apply protective tape to the positions shown in the figure.



ac5uuw00006043

4. Move the outer mirror glass in the directions of the arrows shown in the figure to secure a space for inserting your fingers.



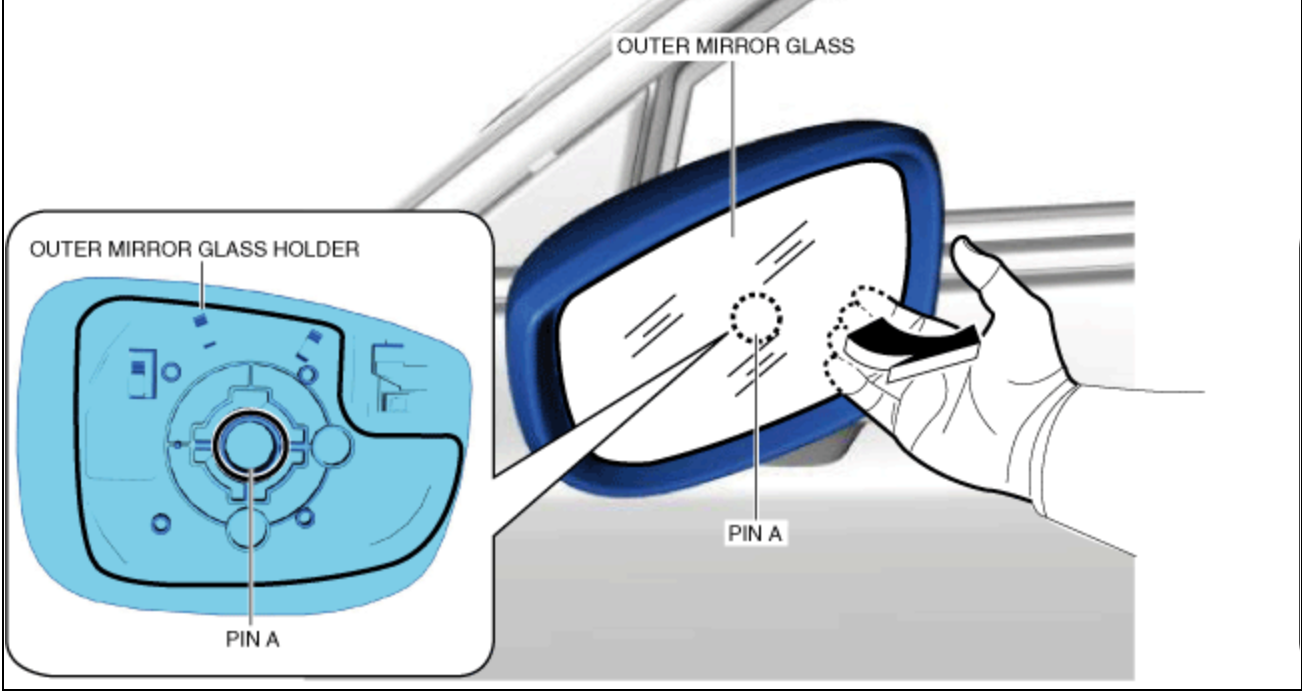
ac5uuw00006044

5. Insert your fingers into the area shown in the figure, and move the outer mirror glass in the direction of the arrow to detach pin A.

Caution

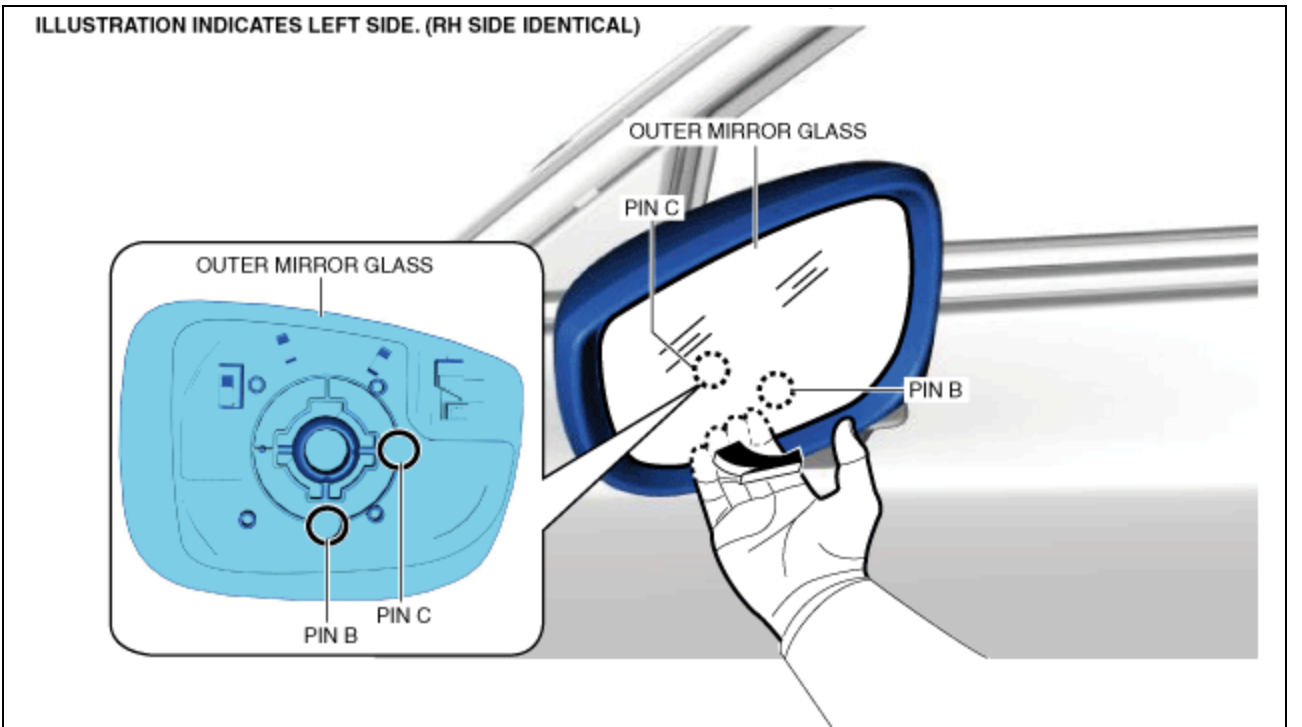
- When moving the outer mirror glass, if only the mirror glass is moved, the mirror glass could separate from the outer mirror glass holder. Move the outer mirror glass holder together with the mirror glass when moving the outer mirror glass.

ILLUSTRATION INDICATES LEFT SIDE. (RH SIDE IDENTICAL)



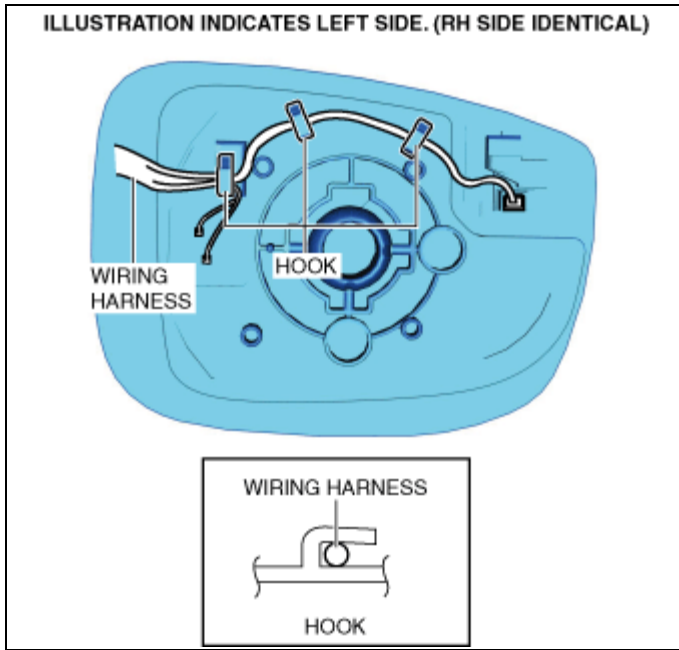
ac5uuw00006045

6. Insert your fingers behind the glass in the same manner as Step 4 and disengage the remaining pins B and C.



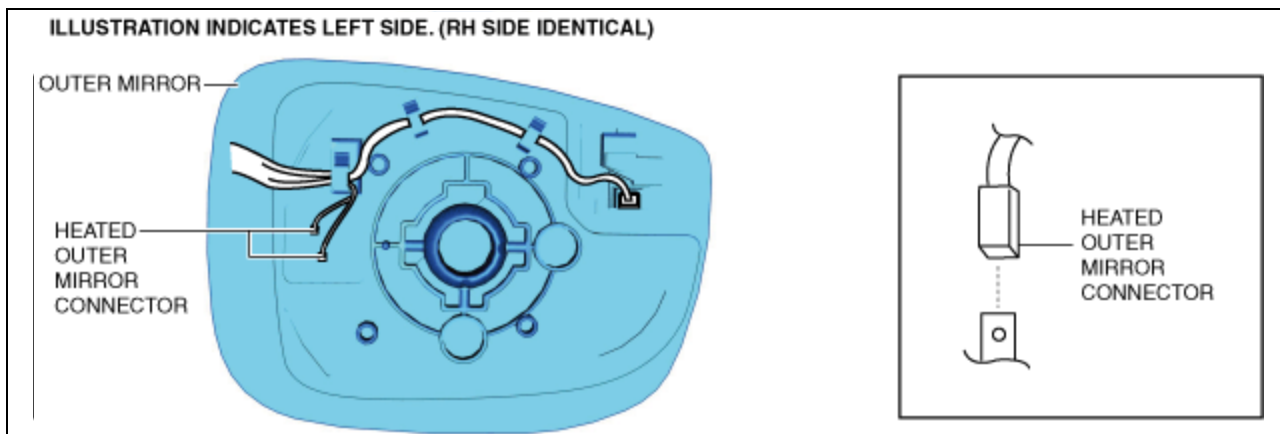
ac5uuw00006046

7. Remove the wiring harness from the hooks.



ac5wzw00012967

8. Disconnect the heated outer mirror connectors. (with heated outer mirror)



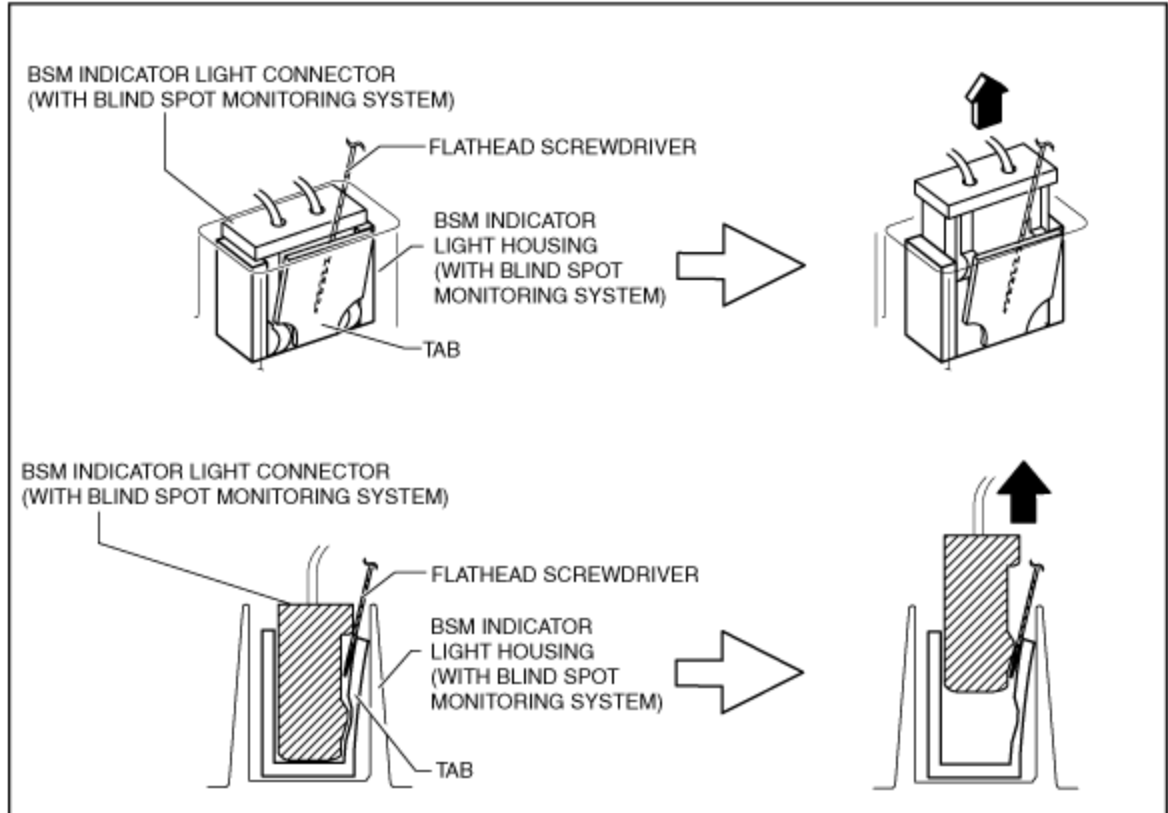
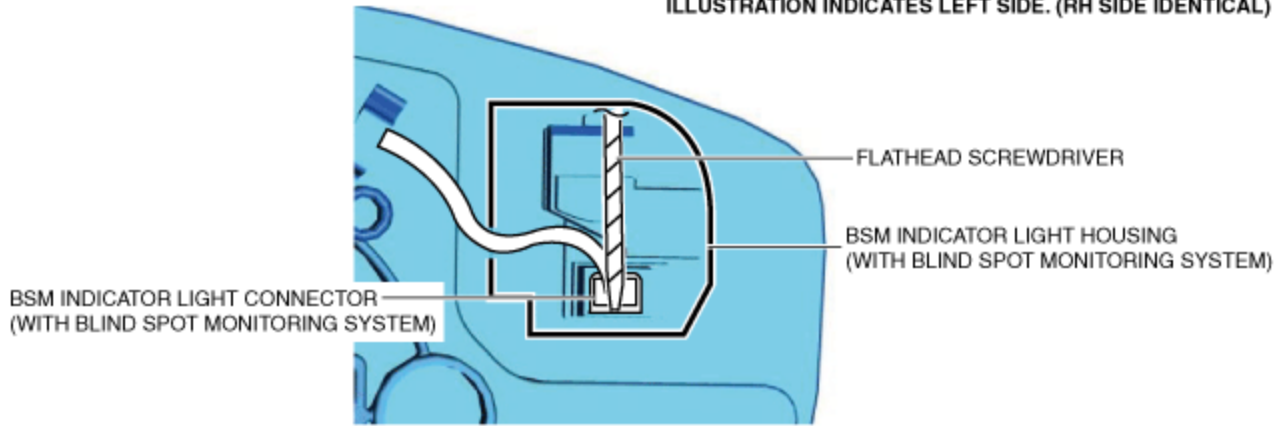
ac5wzw00012968

9. Insert a small, tape-wrapped flathead screwdriver as shown in the figure and disconnect the blind spot monitoring (BSM) indicator light connector. (with blind spot monitoring (BSM) system)

Caution

- Remove the blind spot monitoring (BSM) indicator light connector being careful not to pry the blind spot monitoring (BSM) indicator light housing after inserting a tape-wrapped flathead screwdriver. If the blind spot monitoring (BSM) indicator light connector and the housing are damaged or deformed, poor contact of the connector may occur, causing the indicator light not to turn on.

ILLUSTRATION INDICATES LEFT SIDE. (RH SIDE IDENTICAL)



ac5uuw00006049

10. Remove the outer mirror glass holder and the outer mirror glass as a single unit.